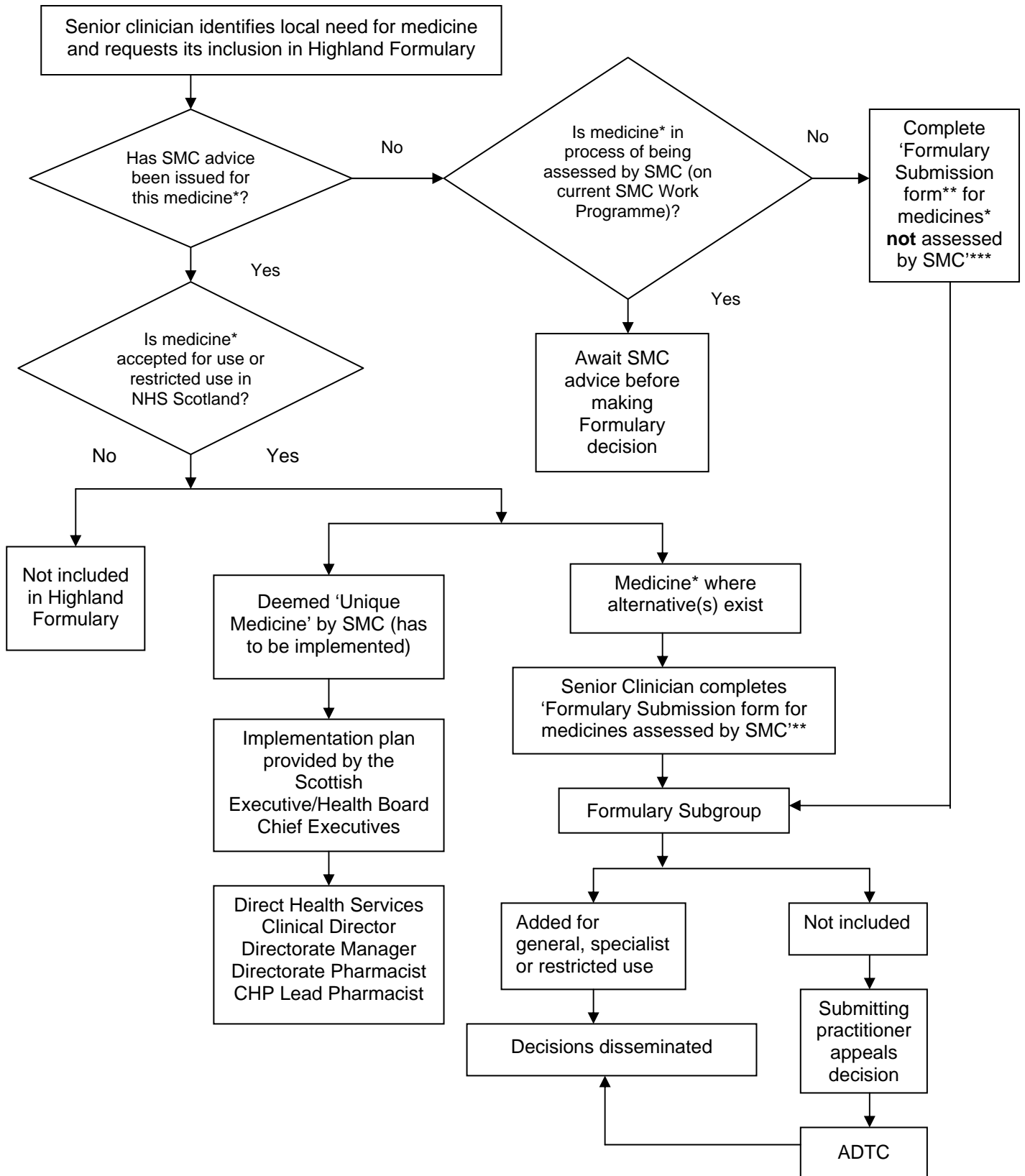


# PROCESS FOR THE ADDITION OF MEDICINES\* TO THE HIGHLAND FORMULARY



\* Includes newly licensed medicines, new formulations of existing medicines, major new indications for established medicines. Excludes high-cost risk-sharing medicines which are handled through other channels.

\*\* Financial arrangements must be in place.

\*\*\* Includes medicines not yet assessed by SMC and those licensed prior to January 2002.